

Sangre Latina

Viola and Guitar

Jaime Romero

1 *Allegro* ♩=120

Viola

mf

Guitar

mp

CII _____ CIV _____

2

4

Viola

Guitar

CII _____

(b)

7

Bass staff for measure 7, featuring a melodic line in 3/4 time with a key signature of three sharps (F#, C#, G#).

7

Treble staff for measure 7, featuring a melodic line in 3/4 time with a key signature of three sharps (F#, C#, G#).

9

Bass staff for measure 9, featuring a melodic line in 3/4 time with a key signature of three sharps (F#, C#, G#).

mp

9

Treble staff for measure 9, featuring a melodic line in 3/4 time with a key signature of three sharps (F#, C#, G#).

p

11

Bass staff for measure 11, featuring a melodic line in 3/4 time with a key signature of three sharps (F#, C#, G#).

CIV

CII

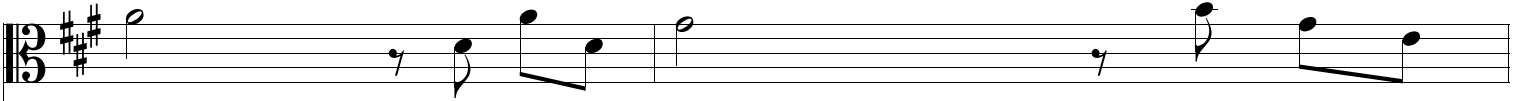
CVII

CII

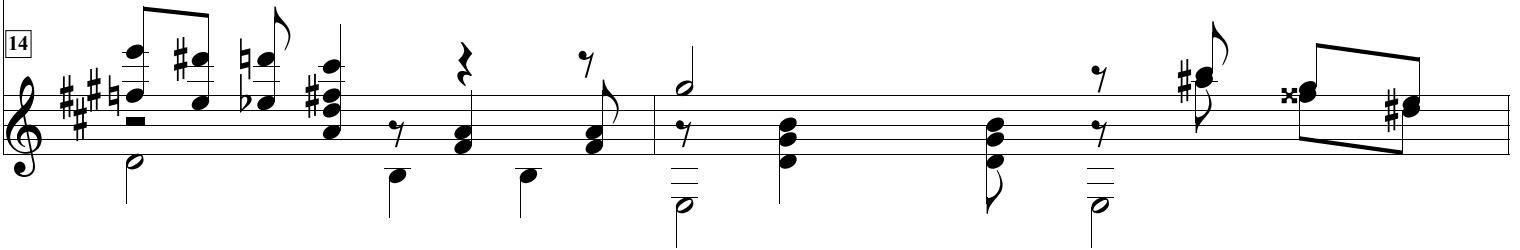
11

Treble staff for measure 11, featuring a melodic line in 3/4 time with a key signature of three sharps (F#, C#, G#). Includes guitar-specific notation such as fingerings (3, 4, 2) and a triplet.

14



14

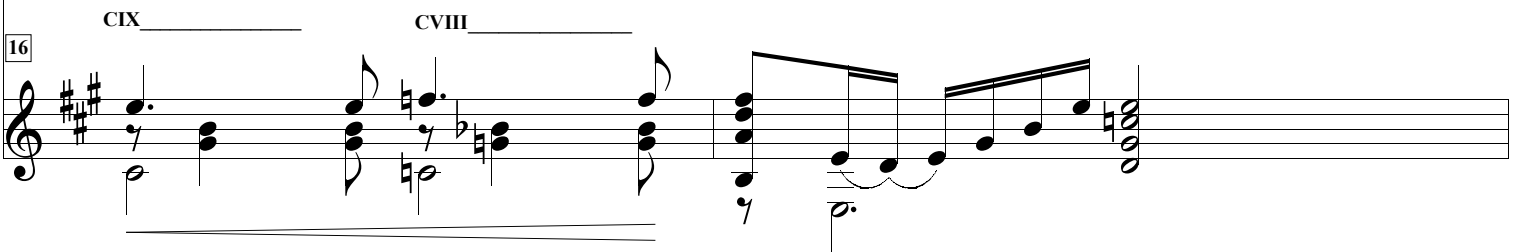


16

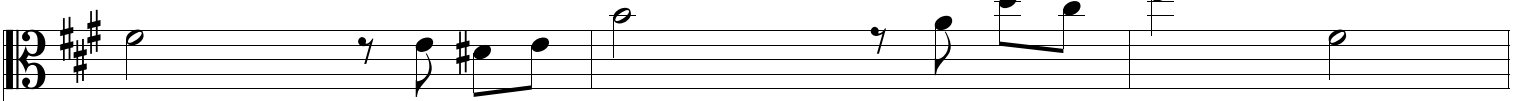


mf

16



18



18



21

Bass staff for measures 21-23. Measure 21: quarter rest, eighth note G4, quarter note F#4, quarter note E4. Measure 22: quarter note D4, quarter note D4. Measure 23: quarter note D4, eighth note G4, quarter note F#4, quarter note E4.

21

Guitar staff for measures 21-23. Measure 21: quarter note G4, quarter note F#4, quarter note E4, quarter note D4. Measure 22: quarter note D4, quarter note D4, quarter note D4, quarter note D4. Measure 23: quarter note D4, quarter note D4, quarter note D4, quarter note D4. Chord diagrams: CIV (D4), CIV (D4), CVI (D4). Fingering: 3, 1, 4, 2.

24

Bass staff for measures 24-26. Measure 24: quarter note G4, quarter note F#4, quarter note E4, quarter note D4. Measure 25: quarter note D4, quarter note D4, quarter note D4, quarter note D4. Measure 26: quarter note D4, quarter note D4, quarter note D4, quarter note D4.

24

Guitar staff for measures 24-26. Measure 24: quarter note G4, quarter note F#4, quarter note E4, quarter note D4. Measure 25: quarter note D4, quarter note D4, quarter note D4, quarter note D4. Measure 26: quarter note D4, quarter note D4, quarter note D4, quarter note D4. Chord diagrams: CII (D4), CIV (D4), CIII (D4).

28

Bass staff for measures 28-30. Measure 28: quarter note G4, quarter note F#4, quarter note E4, quarter note D4. Measure 29: quarter note D4, quarter note D4, quarter note D4, quarter note D4. Measure 30: quarter note D4, quarter note D4, quarter note D4, quarter note D4.

28

Guitar staff for measures 28-30. Measure 28: quarter note G4, quarter note F#4, quarter note E4, quarter note D4. Measure 29: quarter note D4, quarter note D4, quarter note D4, quarter note D4. Measure 30: quarter note D4, quarter note D4, quarter note D4, quarter note D4. Chord diagram: CIV (D4).

38

Bass staff musical notation for measure 38. The key signature has three sharps (F#, C#, G#). The notation includes a grace note on the first eighth note, followed by a quarter note, a dotted quarter note, and an eighth note. The dynamic marking *mf* is at the end of the staff.

38

Treble staff musical notation for measure 38. The key signature has three sharps. The notation consists of a series of chords and single notes. Above the staff, the letters "CII" and "CIV" are written with horizontal lines extending across the staff.

41

Bass staff musical notation for measure 41. The key signature has three sharps. The notation features a series of eighth notes with a downward slant, indicating a descending melodic line.

41

Treble staff musical notation for measure 41. The key signature has three sharps. The notation includes a chord with fingerings 1, 2, 3, 4 and a guitar-specific notation with a circled 'h' and fingerings 1, 3, 4. The staff ends with a double bar line.

42

Bass staff musical notation for measure 42. The key signature has three sharps. The notation includes a grace note on the first eighth note, followed by a quarter note, a dotted quarter note, and an eighth note. The dynamic marking *p* is at the end of the staff.

42

Treble staff musical notation for measure 42. The key signature has three sharps. The notation includes a note with a natural sign and the letter 'si' above it, followed by a quarter note, a dotted quarter note, and an eighth note. The staff ends with a double bar line. Above the staff, the letters "CIII" are written.

44

Bass staff for measures 44-46. The key signature has three sharps (F#, C#, G#). The melody consists of eighth and quarter notes.

44

Tremolo guitar staff for measures 44-46. It features a complex rhythmic pattern with eighth notes and rests, and a 'CII' marking above the staff.

47

Bass staff for measures 47-48. It features a triplet of eighth notes in measure 47 and a triplet of eighth notes in measure 48.

47

Tremolo guitar staff for measures 47-48. It features a complex rhythmic pattern with eighth notes and rests.

49

Bass staff for measures 49-50. It features a complex rhythmic pattern with eighth notes and rests.

49

Tremolo guitar staff for measures 49-50. It features a complex rhythmic pattern with eighth notes and rests, and a '4' marking below the staff.

61

Bass staff for measures 61-63. Measure 61: quarter rest, eighth notes G4, F4, E4, D4, C4, B3. Measure 62: half notes G4, F4. Measure 63: quarter rest, eighth notes G4, F4, E4, D4, C4, B3.

61

Treble staff for measures 61-63. Measure 61: quarter notes G4, F4, E4, D4, C4, B3. Measure 62: quarter notes G4, F4, E4, D4, C4, B3. Measure 63: quarter notes G4, F4, E4, D4, C4, B3. *CII* _____

64

Bass staff for measures 64-66. Measure 64: quarter rest. Measure 65: quarter notes G4, F4, E4, D4, C4, B3. Measure 66: quarter notes G4, F4, E4, D4, C4, B3.

64

Treble staff for measures 64-66. Measure 64: quarter notes G4, F4, E4, D4, C4, B3. Measure 65: quarter notes G4, F4, E4, D4, C4, B3. Measure 66: quarter notes G4, F4, E4, D4, C4, B3. *Cantabile*

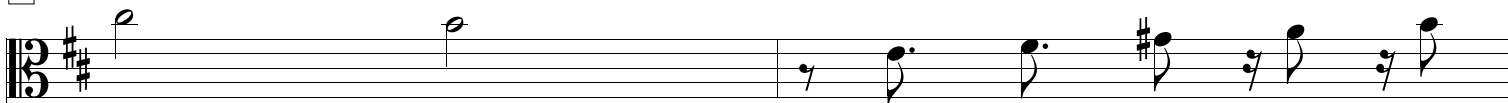
67

Bass staff for measures 67-69. Measure 67: quarter notes G4, F4, E4, D4, C4, B3. Measure 68: quarter notes G4, F4, E4, D4, C4, B3. Measure 69: quarter notes G4, F4, E4, D4, C4, B3.

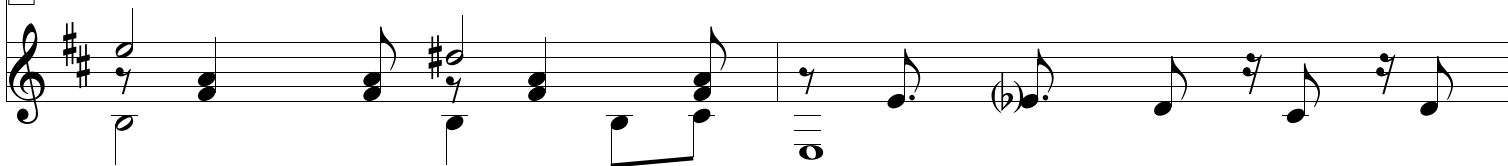
67

Treble staff for measures 67-69. Measure 67: quarter notes G4, F4, E4, D4, C4, B3. Measure 68: quarter notes G4, F4, E4, D4, C4, B3. Measure 69: quarter notes G4, F4, E4, D4, C4, B3.

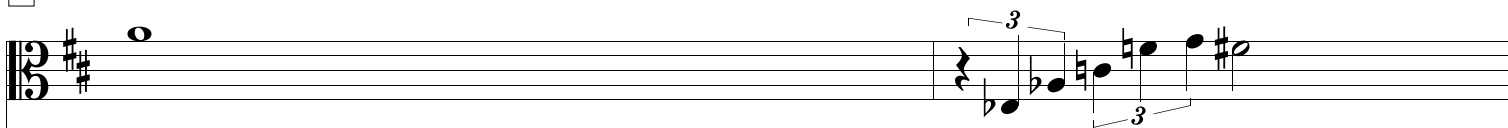
78



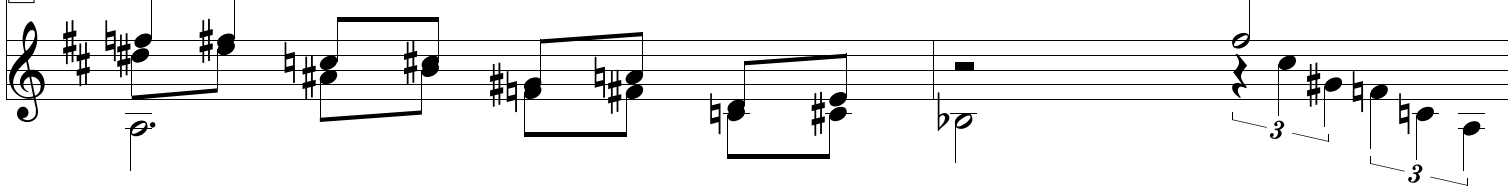
78



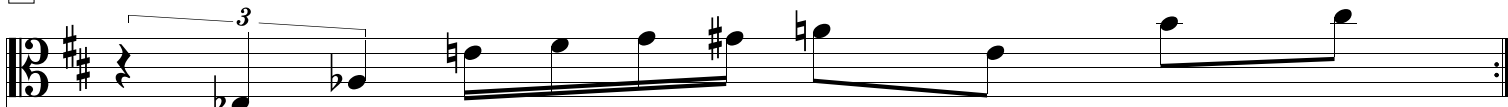
80



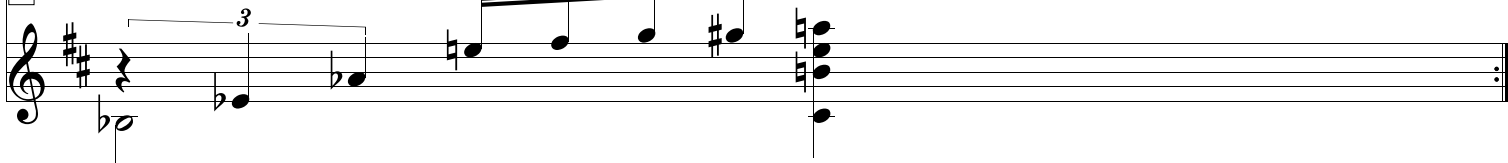
80



82



82



83

Bass staff for measure 83. The key signature is three sharps (F#, C#, G#). The staff begins with a 2-measure rest, followed by a sequence of eighth notes: B2, A2, G#2, F#2, E2, D2, C#2, B1. The measure concludes with a whole note chord consisting of G#1, F#1, and E1.

83

Treble staff for measure 83. The key signature is three sharps (F#, C#, G#). The staff begins with a 2-measure rest, followed by a sequence of eighth notes: G#4, F#4, E4, D4, C#4, B3, A3, G#3. The measure concludes with a whole note chord consisting of G#3, F#3, and E3. A *Rall* marking is positioned below the staff.

Rall

84

Bass staff for measure 84. The key signature is three sharps (F#, C#, G#). The staff begins with a quarter note G#1, followed by a quarter rest, and ends with a whole rest.

84

Treble staff for measure 84. The key signature is three sharps (F#, C#, G#). The staff begins with a quarter note G#4, followed by a quarter rest, and ends with a whole note chord consisting of G#4, F#4, and E4. A guitar fingering '6' is indicated below the first note.