

8

Bass staff for measures 8-11. The key signature has two sharps (F# and C#). The staff contains a melodic line with eighth and quarter notes, including a grace note in the final measure.

8

Treble staff for measures 8-11. The staff contains a complex accompaniment with chords, arpeggios, and sixteenth-note patterns.

12

Bass staff for measures 12-15. The melodic line continues with eighth and quarter notes.

12

Treble staff for measures 12-15. Includes guitar-specific notation such as a barre over the 12th fret (labeled '12') and a capo position (labeled 'CII').

16

Bass staff for measures 16-19. The melodic line continues with eighth and quarter notes. A dynamic marking of *mp* (mezzo-piano) is present.

16

Treble staff for measures 16-19. Includes guitar-specific notation such as barre over the 16th fret (labeled '16') and a dynamic marking of *p* (piano). Chord diagrams for XI, IX, VII, and IV are shown above the staff.

32

Acelerando un poco

32

mas rapido

36

Poco mas

36

rit

1.

40

40

Ad libitum

2nd time jump to bar 61

42

Moderato

Bass staff for measures 42-45. Measure 42 starts with a whole rest. The staff contains eighth and quarter notes in a rhythmic pattern.

A tempo

42

Treble staff for measures 42-45. Measure 42 starts with a whole rest. The staff contains eighth and quarter notes. A *tenuto* marking is present under the first measure. A *b* (flat) is placed above the second measure. A *CII* marking is above the fourth measure. The staff ends with a double bar line.

tenuto

46

Bass staff for measures 46-49. The staff contains eighth and quarter notes in a rhythmic pattern.

46

Treble staff for measures 46-49. The staff contains eighth and quarter notes. A *CII* marking is above the fourth measure. A *Rit* marking is below the fourth measure. The staff ends with a double bar line.

CII

Rit

49

Bass staff for measures 49-52. The staff contains eighth and quarter notes. A *CII* marking is above the second measure. The staff ends with a double bar line.

49

Treble staff for measures 49-52. The staff contains eighth and quarter notes. A *ritardando* marking is below the second measure. An *Acelerando poco a poco* marking is below the third measure. A *CII* marking is above the fourth measure. The staff ends with a double bar line.

ritardando

Acelerando poco a poco

CII

54

Bass staff for measures 54-57. The music is in G major and 3/4 time. It features a melodic line with eighth and sixteenth notes, including a triplet in measure 57.

54

Treble staff for measures 54-57. It features a complex accompaniment with chords, triplets, and sixteenth-note patterns.

Acelerando

58

Bass staff for measures 58-61. It continues the melodic line from the previous system, ending with a first ending bracket over the final two measures.

58

Treble staff for measures 58-61. The accompaniment includes chords and melodic fragments. A first ending bracket is present over the final two measures.

Acelerando

Con brio

62

Bass staff for measures 62-65. The melodic line continues with eighth and sixteenth notes.

62

Treble staff for measures 62-65. The accompaniment features chords and melodic lines.

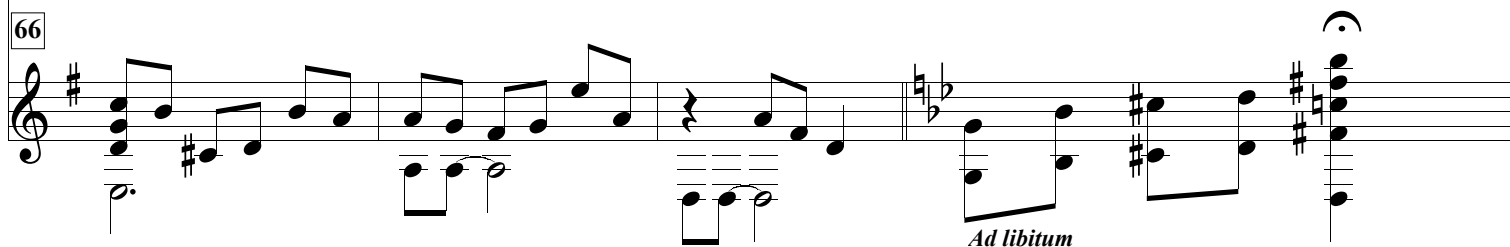
66

Da Segno 



Bass staff for measure 66, showing a sequence of notes in a key with one sharp (F#) and a common time signature.

66

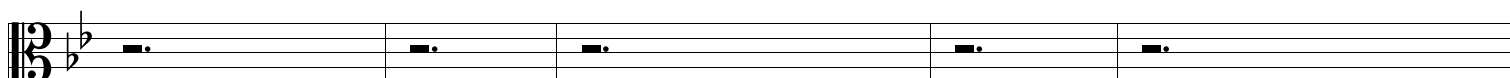


Treble staff for measure 66, showing a sequence of notes and chords. The tempo marking *Ad libitum* is present at the end of the staff.

Ad libitum

70

Moderato

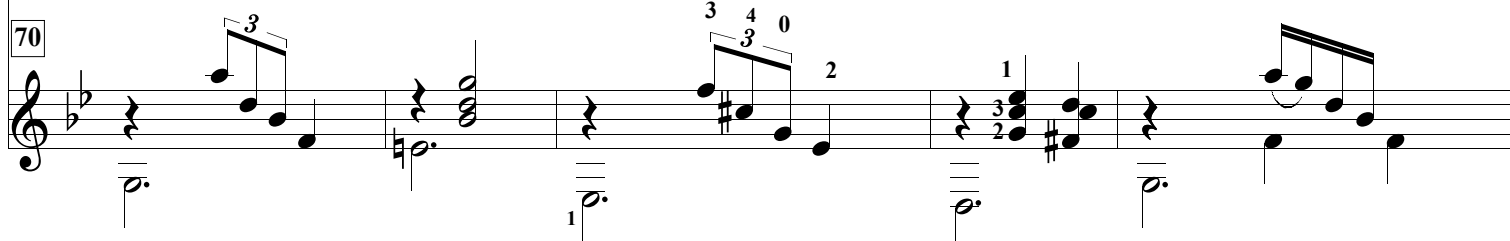


Bass staff for measure 70, showing a sequence of notes and rests.

CIII _____

CIII _____

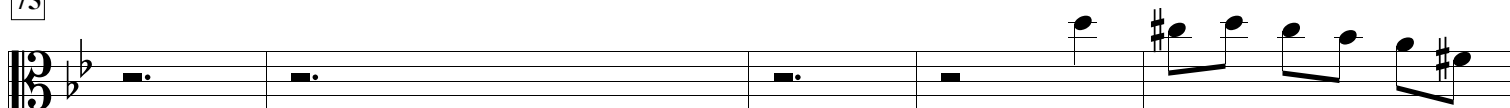
70



Treble staff for measure 70, showing a sequence of notes and chords with fingerings (1, 2, 3, 4, 0) and a *Misterioso* marking.

Misterioso

75



Bass staff for measure 75, showing a sequence of notes and rests.

CIII _____

75



Treble staff for measure 75, showing a sequence of notes and chords with a *Tenuto* marking and a *A tempo* marking.

Tenuto

A tempo

80

Bass staff for measures 80-83. Measure 80: quarter note G2, quarter note A2, quarter note B2, quarter note C3. Measure 81: quarter note D3, quarter note E3, quarter note F3, quarter note G3. Measure 82: quarter note A3, quarter note B3, quarter note C4, quarter note D4. Measure 83: quarter rest, quarter rest, quarter rest, quarter rest, quarter note E4, quarter note F4, quarter note G4, quarter note A4.

80

Treble staff for measures 80-83. Measure 80: quarter note G2, quarter note A2, quarter note B2, quarter note C3. Measure 81: quarter note D3, quarter note E3, quarter note F3, quarter note G3. Measure 82: quarter note A3, quarter note B3, quarter note C4, quarter note D4. Measure 83: quarter note E4, quarter note F4, quarter note G4, quarter note A4.

84

Bass staff for measures 84-87. Measure 84: quarter note G2, quarter note A2, quarter note B2, quarter note C3. Measure 85: quarter note D3, quarter note E3, quarter note F3, quarter note G3. Measure 86: quarter note A3, quarter note B3, quarter note C4, quarter note D4. Measure 87: quarter note E4, quarter note F4, quarter note G4, quarter note A4.

84

Treble staff for measures 84-87. Measure 84: quarter note G2, quarter note A2, quarter note B2, quarter note C3. Measure 85: quarter note D3, quarter note E3, quarter note F3, quarter note G3. Measure 86: quarter note A3, quarter note B3, quarter note C4, quarter note D4. Measure 87: quarter note E4, quarter note F4, quarter note G4, quarter note A4.

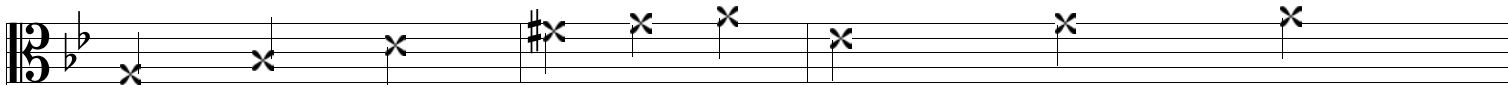
87

Bass staff for measures 87-90. Measure 87: quarter note G2, quarter note A2, quarter note B2, quarter note C3. Measure 88: quarter note D3, quarter note E3, quarter note F3, quarter note G3. Measure 89: quarter note A3, quarter note B3, quarter note C4, quarter note D4. Measure 90: quarter note E4, quarter note F4, quarter note G4, quarter note A4.

87

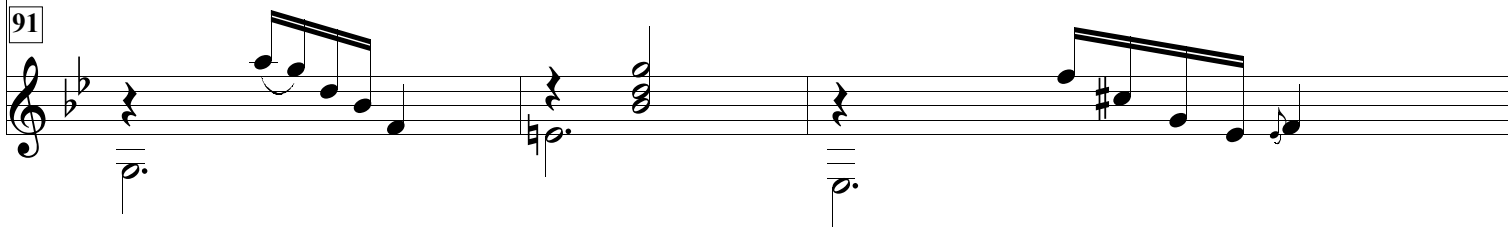
Treble staff for measures 87-90. Measure 87: quarter note G2, quarter note A2, quarter note B2, quarter note C3. Measure 88: quarter note D3, quarter note E3, quarter note F3, quarter note G3. Measure 89: quarter note A3, quarter note B3, quarter note C4, quarter note D4. Measure 90: quarter note E4, quarter note F4, quarter note G4, quarter note A4.

91



Bass staff for measures 91-93. Measure 91: G2, F2, E2. Measure 92: D2, C2, B1. Measure 93: A1, G1, F1.

91



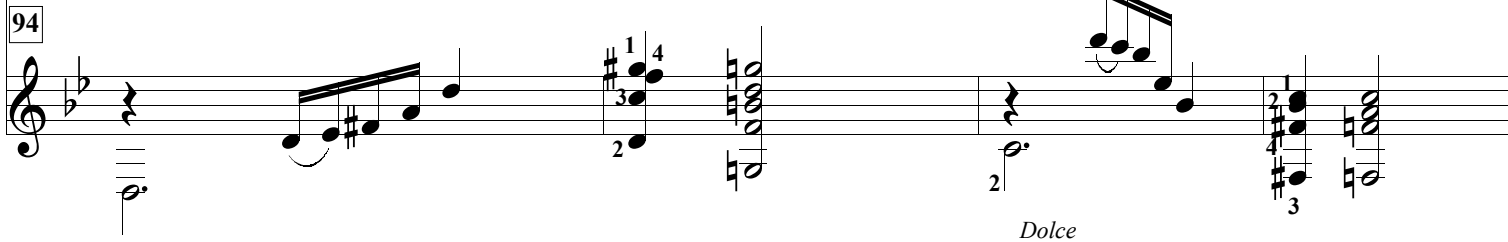
Treble staff for measures 91-93. Measure 91: G4, A4, B4. Measure 92: C5, B4, A4. Measure 93: G4, F4, E4.

94



Bass staff for measures 94-96. Measure 94: G2, F2, E2. Measure 95: D2, C2, B1. Measure 96: A1, G1, F1.

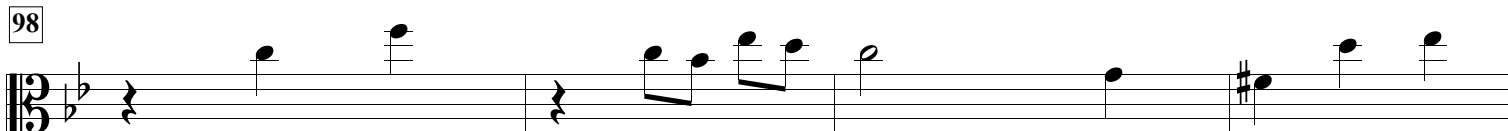
94



Treble staff for measures 94-96. Measure 94: G4, A4, B4. Measure 95: C5, B4, A4. Measure 96: G4, F4, E4. Includes fingering numbers 1, 2, 3, 4 and the instruction *Dolce*.

CVIII

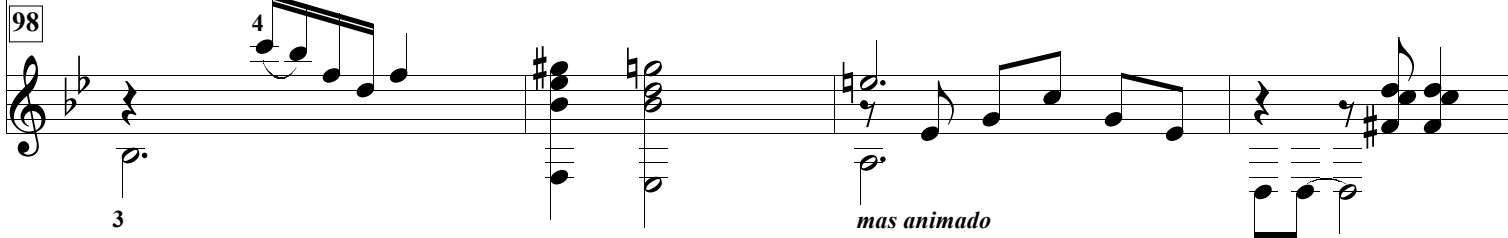
98



Bass staff for measures 98-100. Measure 98: G2, F2, E2. Measure 99: D2, C2, B1. Measure 100: A1, G1, F1.

CVI

98



Treble staff for measures 98-100. Measure 98: G4, A4, B4. Measure 99: C5, B4, A4. Measure 100: G4, F4, E4. Includes fingering numbers 3, 4 and the instruction *mas animado*.

3

mas animado

102

Bass staff for measure 102, showing a melodic line with eighth and sixteenth notes, including a triplet of eighth notes.

102

Guitar staff for measure 102, showing chord diagrams and fingering (1, 2, 3, 4) for the notes.

104

Bass staff for measure 104, showing a melodic line with eighth notes and some rests.

CVI _____ CVI _____

104

Guitar staff for measure 104, showing chord diagrams (CIII, CI) and a triplet of eighth notes.

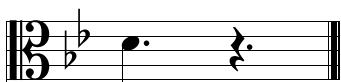
110

Bass staff for measure 110, showing a melodic line with eighth notes and rests.

110

Guitar staff for measure 110, showing chord diagrams and a triplet of eighth notes.

122



122

