

Delirio y Fuga

Viola and Guitar

Jaime Romero

1

Viola

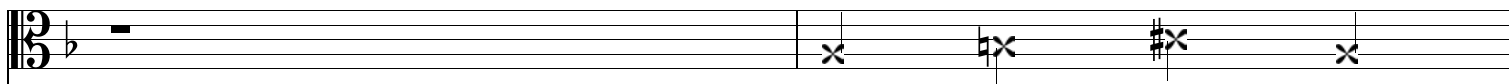
Guitar

mf

3

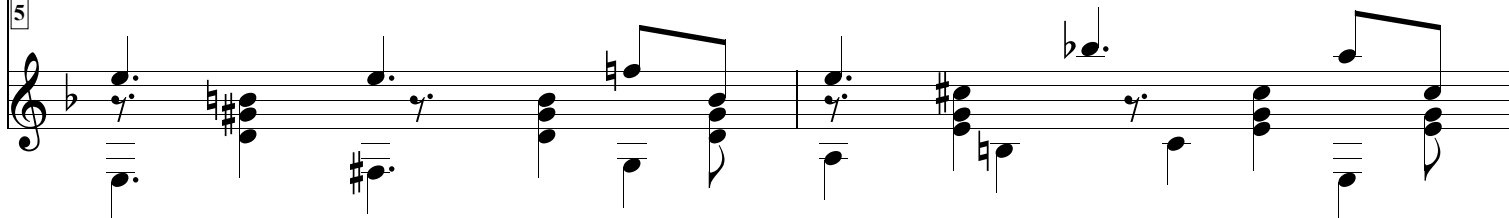
Guitar

5



Pizz

5

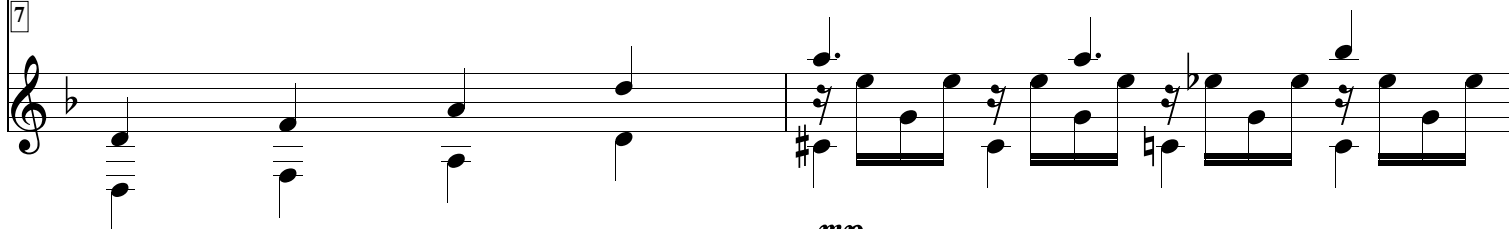


7



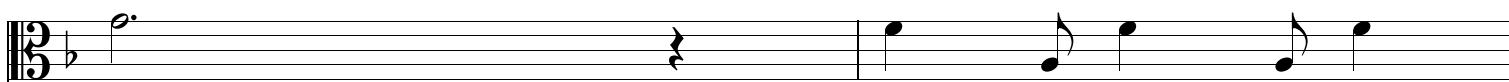
mf

7

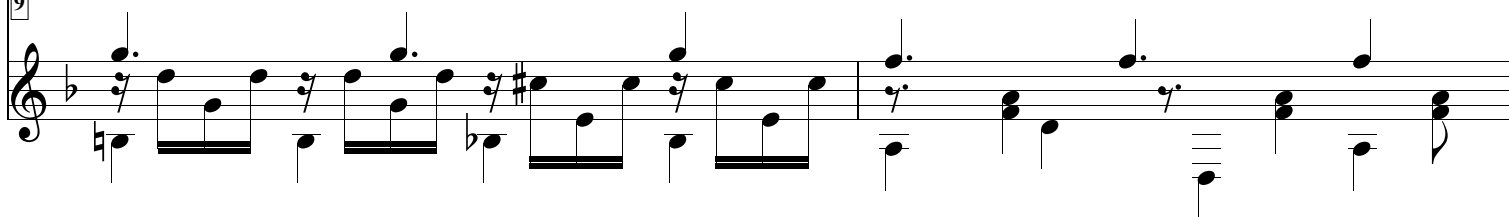


mp

9



9



21

Bass staff musical notation for measure 21, featuring a melodic line in B-flat major with a half note rest, quarter notes, and eighth notes.

21

Treble staff musical notation for measure 21, featuring a guitar accompaniment with a dotted quarter note, eighth notes, and quarter notes.

23

Bass staff musical notation for measure 23, featuring a melodic line in B-flat major with quarter notes and eighth notes.

23

Treble staff musical notation for measure 23, featuring a guitar accompaniment with a rhythmic pattern of eighth notes and quarter notes.

25

Bass staff musical notation for measure 25, featuring a melodic line in B-flat major with quarter notes and eighth notes.

Romantico

25

Treble staff musical notation for measure 25, featuring a guitar accompaniment with a rhythmic pattern of eighth notes and quarter notes.

Appassionato

27

Measures 27-28 of the bass line. Measure 27 contains a descending eighth-note scale from G4 to B3. Measure 28 contains a dotted quarter note G3, a quarter note F#3, and a quarter note E3.

27

Measures 27-28 of the treble line. Measure 27 contains a series of eighth-note chords: G4B3, A3G3, B3A2, C3B2, D3C2, E3D2, F3E2, G3F2. Measure 28 contains a series of eighth-note chords: G4B3, A3G3, B3A2, C3B2, D3C2, E3D2, F3E2, G3F2. The bass line consists of a dotted quarter note G3, a quarter note F#3, and a quarter note E3.

29

Measures 29-30 of the bass line. Measure 29 contains a dotted quarter note G3, a quarter note F#3, and a quarter note E3. Measure 30 contains a quarter note D3, a quarter note C3, and a quarter note B2.

29

Measures 29-30 of the treble line. Measure 29 contains a series of eighth-note chords: G4B3, A3G3, B3A2, C3B2, D3C2, E3D2, F3E2, G3F2. Measure 30 contains a series of eighth-note chords: G4B3, A3G3, B3A2, C3B2, D3C2, E3D2, F3E2, G3F2. The bass line consists of a dotted quarter note G3, a quarter note F#3, and a quarter note E3.

CIII _____

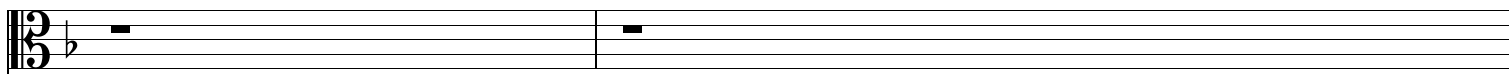
31

Measures 31-32 of the bass line. Measure 31 contains a dotted quarter note G3, a quarter note F#3, and a quarter note E3. Measure 32 contains a quarter rest.

31

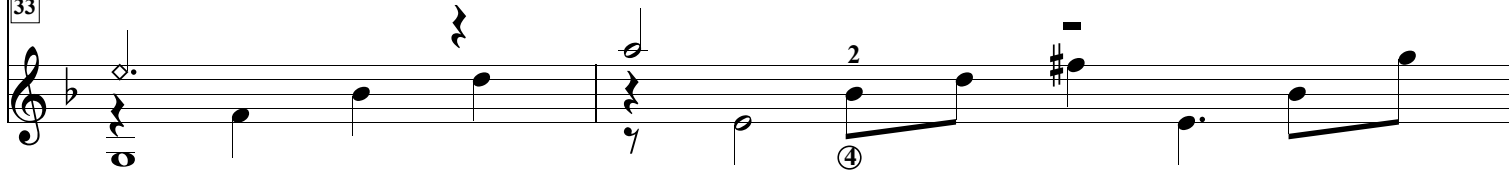
Measures 31-32 of the treble line. Measure 31 contains a series of eighth-note chords: G4B3, A3G3, B3A2, C3B2, D3C2, E3D2, F3E2, G3F2. Measure 32 contains a series of eighth-note chords: G4B3, A3G3, B3A2, C3B2, D3C2, E3D2, F3E2, G3F2. The bass line consists of a dotted quarter note G3, a quarter note F#3, and a quarter note E3.

33



CVII _____

33



Ad Libitum

mf

♩=67

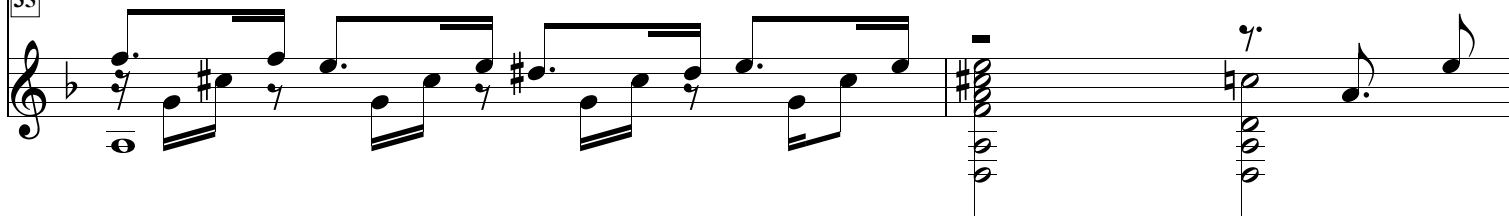
35



p

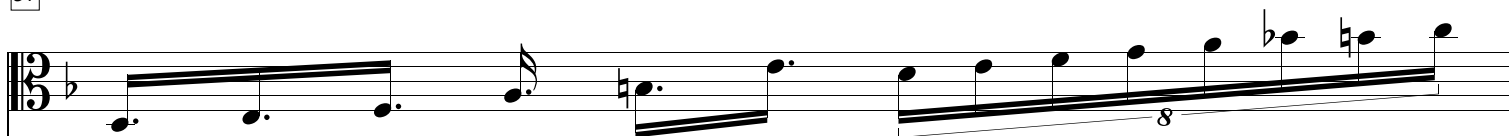
CV _____

35

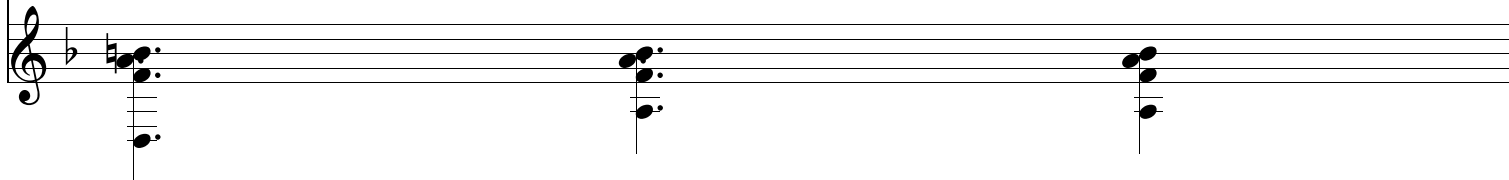


Ritardando

37



37



38



Bass staff for measure 38, showing a sequence of four quarter notes: G2, F2, E2, D2.

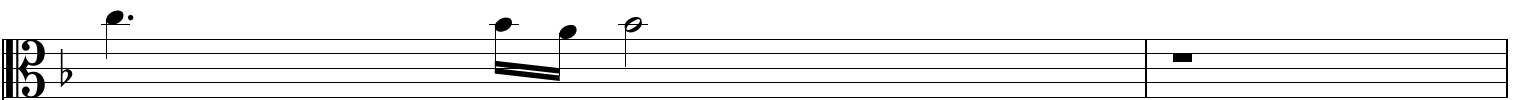
III

38



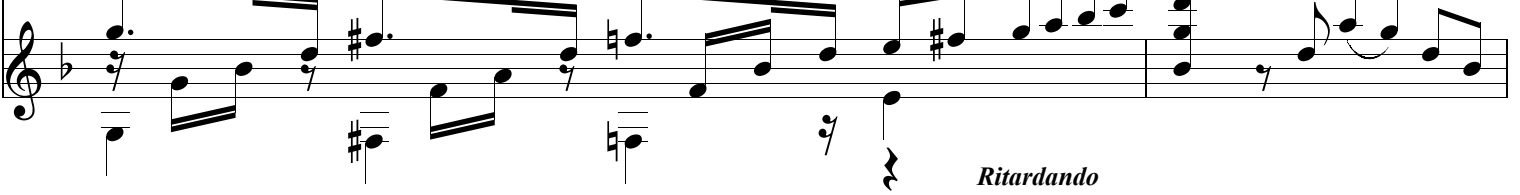
Guitar staff for measure 38, featuring a melodic line with slurs and a dynamic marking of *mf*.

39



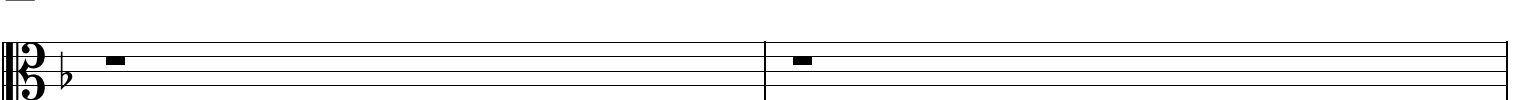
Bass staff for measure 39, showing a sequence of notes: G2, F2, E2, D2, C2, B1.

39



Guitar staff for measure 39, featuring a melodic line with slurs and a dynamic marking of *Ritardando*.

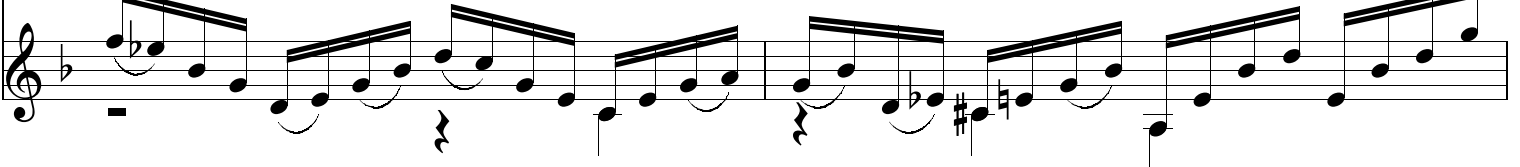
41



Bass staff for measure 41, showing a sequence of notes: G2, F2, E2, D2, C2, B1.

III

41



Guitar staff for measure 41, featuring a melodic line with slurs and a dynamic marking of *Acelerando poco a poco* and *Crescendo*.

Acelerando poco a poco

Crescendo

49

Bass staff for measures 49-50. Measure 49 contains a quarter note G2, a quarter rest, a quarter note F2, a quarter rest, and a quarter note E2. Measure 50 contains a quarter note D2, a quarter note C2, a quarter note B1, a quarter note A1, a quarter note G1, a quarter note F1, a quarter note E1, and a quarter note D1. A bracket under the notes in measure 50 is labeled with the number 5. The dynamic marking *mf* is placed below the staff.

49

Treble staff for measures 49-50. Measure 49 contains a quarter note G4, a quarter note F4, a quarter note E4, and a quarter note D4. Measure 50 contains a quarter note C4, a quarter note B3, a quarter note A3, and a quarter note G3. The dynamic marking *f* is placed below the staff.

51

Bass staff for measures 51-52. Measure 51 contains a quarter note G2, a quarter note F2, a quarter note E2, and a quarter note D2. Measure 52 contains a quarter note C2, a quarter note B1, a quarter note A1, and a quarter note G1. The dynamic marking *f* is placed below the staff.

51

Treble staff for measures 51-52. Measure 51 contains a quarter note G4, a quarter note F4, a quarter note E4, and a quarter note D4. Measure 52 contains a quarter note C4, a quarter note B3, a quarter note A3, and a quarter note G3. The dynamic marking *f* is placed below the staff.

53

Bass staff for measures 53-54. Measure 53 contains a quarter note G2, a quarter note F2, a quarter note E2, and a quarter note D2. Measure 54 contains a quarter note C2, a quarter note B1, a quarter note A1, and a quarter note G1. The dynamic marking *p* is placed below the staff.

53

Treble staff for measures 53-54. Measure 53 contains a quarter note G4, a quarter note F4, a quarter note E4, and a quarter note D4. Measure 54 contains a quarter note C4, a quarter note B3, a quarter note A3, and a quarter note G3. The dynamic marking *mf* is placed below the staff.

59

Bass staff for measure 59. It begins with a whole note chord, followed by a quarter rest, and then a quarter note with a slur and a '2' underneath. This is followed by another quarter note with a slur and a '2' underneath, and finally a quarter note with a sharp sign.

59

Treble staff for measure 59. It starts with a whole note chord, followed by a quarter note, and then a quarter note with a slur and a '2' underneath. This is followed by another quarter note with a slur and a '2' underneath, and finally a quarter note with a sharp sign.

61

Bass staff for measure 61. It features a series of eighth notes with a slur, followed by a quarter note with a slur and a '2' underneath, and then another quarter note with a slur and a '2' underneath.

61

Treble staff for measure 61. It shows a series of chords and notes, including a quarter note with a slur and a '2' underneath, and another quarter note with a slur and a '2' underneath.

63

Bass staff for measure 63. It contains several notes marked with an 'x', indicating natural harmonics, and a quarter note with a sharp sign.

p

63

Treble staff for measure 63. It shows a series of notes and chords, including a quarter note with a sharp sign.

65

Bass staff for measure 65. The staff contains a sequence of notes with various articulations, including slurs and accents. A five-fingered scale run is indicated by a bracket and the number '5' at the end of the staff.

65

Treble staff for measure 65. The staff contains a sequence of notes with various articulations, including slurs and accents. A five-fingered scale run is indicated by a bracket and the number '5' at the end of the staff.

67

Bass staff for measure 67. The staff contains a sequence of notes with various articulations, including slurs and accents. The dynamic marking *mf* is placed below the staff.

67

Treble staff for measure 67. The staff contains a sequence of notes with various articulations, including slurs and accents. The dynamic marking *mp* is placed below the staff.

69

Bass staff for measure 69. The staff contains a sequence of notes with various articulations, including slurs and accents.

69

Treble staff for measure 69. The staff contains a sequence of notes with various articulations, including slurs and accents.

75

Bass staff for measure 75, featuring a melodic line with eighth notes and a final quarter rest.

75

Treble staff for measure 75, featuring a chordal accompaniment with a tremolo effect on the first chord and a final eighth-note run.

77

Bass staff for measure 77, featuring a melodic line with eighth notes, a double bar line, and a fermata.

77

Treble staff for measure 77, featuring a chordal accompaniment with a tremolo effect on the first chord and a final eighth-note run.

79

Bass staff for measure 79, featuring a melodic line with eighth notes and a final quarter rest.

79

Treble staff for measure 79, featuring a chordal accompaniment with a tremolo effect on the first chord and a final eighth-note run.

80

80

ff

ff